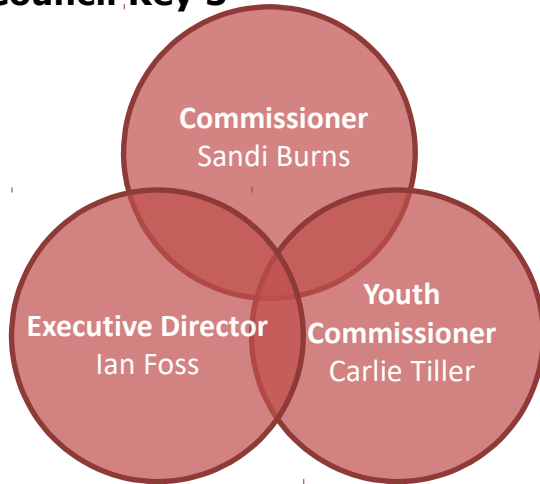


Tri-Shores Council Service Team

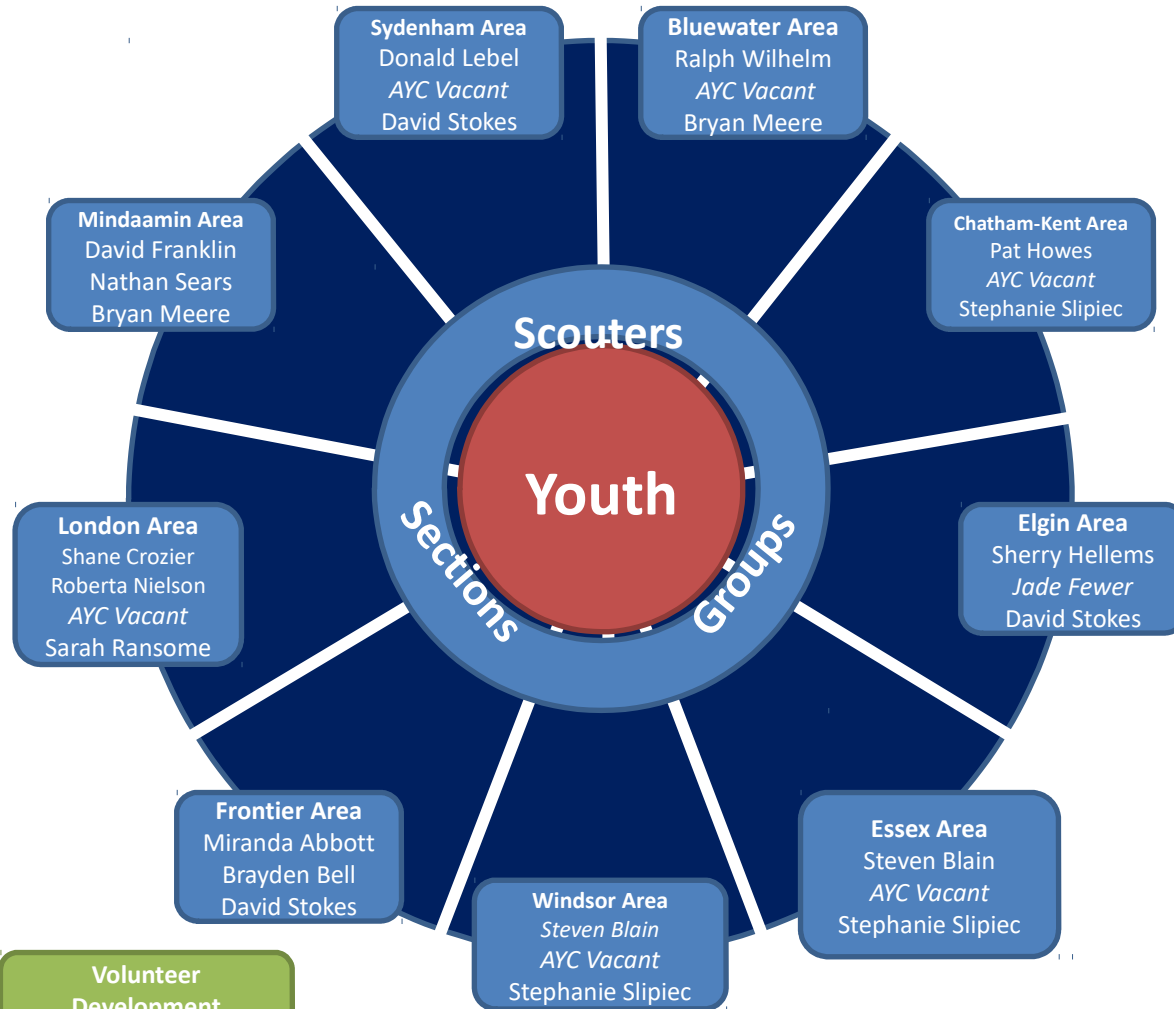


It starts with Scouts.

Council Key 3



Ontario Operations Manager
Dave Osborne



Council Strategy

Tri-Shores Council aims to grow its membership to more than 4,000 well-rounded youth by 2018

Our 2017/18 Priorities

Safety

Completely screened in 90 days

Growth

Grow membership by 10%.

Program Quality

Sections complete 3 cycle reviews.

Volunteer Support

Invite community to volunteer with Scouting

Group Capacity

3 Non Section Scouters supporting every Group

Office Manager
Michelle Taylor

Executive Assistant
Debbie Maw

Camp Coordinator
Michelle Babiarz

Council Registrar(s)
Alisa Yegorova
Ashley Kimber

Safe Scouting
Bob Ebbinghaus

Recognition
Patricia Baker

Volunteer Development
Steve Locke

Marketing & Communications
Angelina Albert

Special Events
John Sing

Youth Development
Vacant

Youth Social Media Outreach

Council Property
Rob Tuer

OIB Director
Rob Tuer

Indigenous Group
Jill Joseph

Popcorn Coordinator
Betty-Ann Wilhelm

Program
Michele Martin

Youth Growth
Vacant

Deputy Elections Officer
Steve Locke

Council Key Three

| | | |
|---------------------------------------|---------------|----------------------------|
| Council Commissioner | Sandi Burns | sburns[at]scouts.ca |
| Council Youth Commissioner | Carlie Tiller | carlie.tiller[at]scouts.ca |
| Executive Director of Western Ontario | Ian Foss | ian.foss[at]scouts.ca |

Council Service Team

| | | |
|--|------------------------|---------------------------------|
| DCC - Safe Scouting | Bob Ebbinghaus | charles.ebbinghaus[at]scouts.ca |
| DCYC - Safe Scouting | Dylan Dufour | skdufour[at]gmail.com |
| DCC - Volunteer Development | Steve Locke | slocke1[at]cogeco.ca |
| DCYC - Youth Development | Ryan Theoret | ryan.theoret[at]scouts.ca |
| DCC - Canadian Path Program | Michele Martin | - |
| DCC - Recognition | Patricia Baker | patricia.baker[at]scouts.ca |
| Assistant DCC - Recognition | Stewart Giem | stewart.giem[at]scouts.ca |
| Assistant DCC - Recognition | Carrie Baljet | - |
| Assistant DCC - Recognition | Tim Boston | tim.boston[at]scouts.ca |
| DCC - Marketing/Communications/Promotion | <i>Position Vacant</i> | - |
| DCYC - Social Media Outreach | Tia Layne | tia.layne[at]scouts.ca |
| DCYC - Growth | Aaron Buehler | aaroncb2000[at]gmail.com |
| DCC - Special Events | John Sing | john.sing[at]scouts.ca |

Council Key Volunteers

| | | |
|--------------------------------------|-------------------|-------------------------------|
| Popcorn Coordinator | Betty-Ann Wilhelm | bettyann.wilhelm[at]scouts.ca |
| CJ'17 Coordinator | Scott Young | swojamboree[at]gmail.com |
| Treasure and Finance Committee Chair | | |
| Council Property Chair | Rob Tuer | robtuerfinancial[at]gmail.com |
| Ontario Incorporated Body Director | Rob Tuer | robtuerfinancial[at]gmail.com |
| Deputy Elections Officer | Steve Locke | steve.locke[at]scouts.ca |
| Voting Member | | |
| Voting Member | | |
| Voting Member (<i>Youth</i>) | Carlie Tiller | carlie.tiller[at]scouts.ca |

Administrative Staff

| | | |
|---------------------------|------------------|-----------------------------|
| London Office | | |
| Office Manager/Bookkeeper | Michelle Taylor | mtaylor[at]scouts.ca |
| Executive Assistant | Debbie Maw | dmaw[at]scouts.ca |
| Administrative Assistant | Nicki Jeffery | njeffery[at]scouts.ca |
| Toronto Office | | |
| Camp Coordinator | Michelle Babiarz | mbabiarz[at]scouts.ca |
| Council Registrar | Alisa Yegorova | alisa.yegorova[at]scouts.ca |
| Council Registrar | Ashley Kimber | ashley.kimber[at]scouts.ca |

Area Key-Three

| | | |
|-------------------------|------------------------|-------------------------------|
| Bluewater Area | | |
| Area Commissioner | Ralph Wilhelm | ralph.wilhelm[at]scouts.ca |
| Area Youth Commissioner | <i>Position Vacant</i> | - |
| Area Support Manager | Bryan Meere | bryan.meere[at]scouts.ca |
| Chatham-Kent Area | | |
| Area Commissioner | Pat Howes | pat.howes[at]scouts.ca |
| Area Youth Commissioner | <i>Position Vacant</i> | - |
| Area Support Manager | Sarah Ransome | sransome[at]scouts.ca |
| Elgin Area | | |
| Area Commissioner | Pat Baker | patricia.baker[at]scouts.ca |
| Area Youth Commissioner | <i>Position Vacant</i> | - |
| Area Support Manager | David Stokes | dstokes[at]scouts.ca |
| Essex Area | | |
| Area Commissioner | Penny Craig | 2pennyc[at]bell.net |
| Area Youth Commissioner | <i>Position Vacant</i> | - |
| Area Support Manager | Bryan Meere | bryan.meere[at]scouts.ca |
| Frontier Area | | |
| Area Commissioner | Miranda Abbott | miranda.abbott[at]scouts.ca |
| Area Youth Commissioner | Brayden Bell | braybell15[at]outlook.com |
| Area Support Manager | David Stokes | dstokes[at]scouts.ca |
| London Area | | |
| Area Commissioner | Steve Lindsay | s.lindsay[at]londonscouts.ca |
| Area Youth Commissioner | Taylor Roch | taylor.roch[at]scouts.ca |
| Area Support Manager | Sarah Ransome | sransome[at]scouts.ca |
| Mindaamin Area | | |
| Area Commissioner | Mike Billham | michael.billham[at]scouts.ca |
| Area Youth Commissioner | <i>Position Vacant</i> | - |
| Area Support Manager | Bryan Smith | bryan.smith[at]scouts.ca |
| Sydenham Area | | |
| Area Commissioner | Donald Lebel | don.lebel[at]scouts.ca |
| Area Youth Commissioner | <i>Position Vacant</i> | - |
| Area Support Manager | David Stokes | dstokes[at]scouts.ca |
| Windsor Area | | |
| Area Commissioner | <i>Position Vacant</i> | - |
| Area Youth Commissioner | Michael Bertotti | michael.bertotti[at]scouts.ca |
| Area Support Manager | Bryan Meere | bryan.meere[at]scouts.ca |